



## SPECIFICATIONS

- Model Code** : TT57PAC40-SLA  
**Model Year** : 2020  
**Body Type** : CrewMax  
**Axle** : 4WD  
**Displacement** : 5.7L  
**Transmission** : Automatic Transmission  
**Fuel Type** : Petrol  
**Door** : 4 Doors  
**Seats** : 5 Seats  
**Seat Material** : Leather Seats  
**Rim Size/Type** : 18-in. 5-spoke alloy wheels  
**Temp Control** : Dual zone automatic climate control  
**Headlamp** : Halogen headlights with LED accent lights  
**Window Type** : Power  
**Roof** : Power tilt/slide moonroof with sliding sunshade



## TECHNICAL SPECIFICATION

- 5.7-Liter Aluminum i-FORCE V8 DOHC 32-Valve with Dual Independent Variable Valve Timing with intelligence (VVT-i)
- 381 hp @ 5600 rpm; 401 lb.-ft. @ 3600 rpm
- Tow Package 3
- 6-speed Electronically Controlled automatic Transmission with intelligence (ECT-i)
- Rear-Wheel Drive (RWD) or 4WDemand part-time 4WD

## INTERIOR

- Audio Plus with 8-in. high-resolution touch-screen, and Apple CarPlay,<sup>®11</sup> Android Auto<sup>™10</sup> and Amazon Alexa<sup>69</sup> compatible
- HD Radio<sup>™</sup> 22 and SiriusXM<sup>®</sup> 15
- Bluetooth<sup>®</sup> 14 wireless technology
- USB media port<sup>12</sup> with charging capability
- Black premium perforated leather-trimmed seats
- Integrated backup camera 9
- Integrated Trailer Brake Controller (ITBC) 37



## EXTERIOR

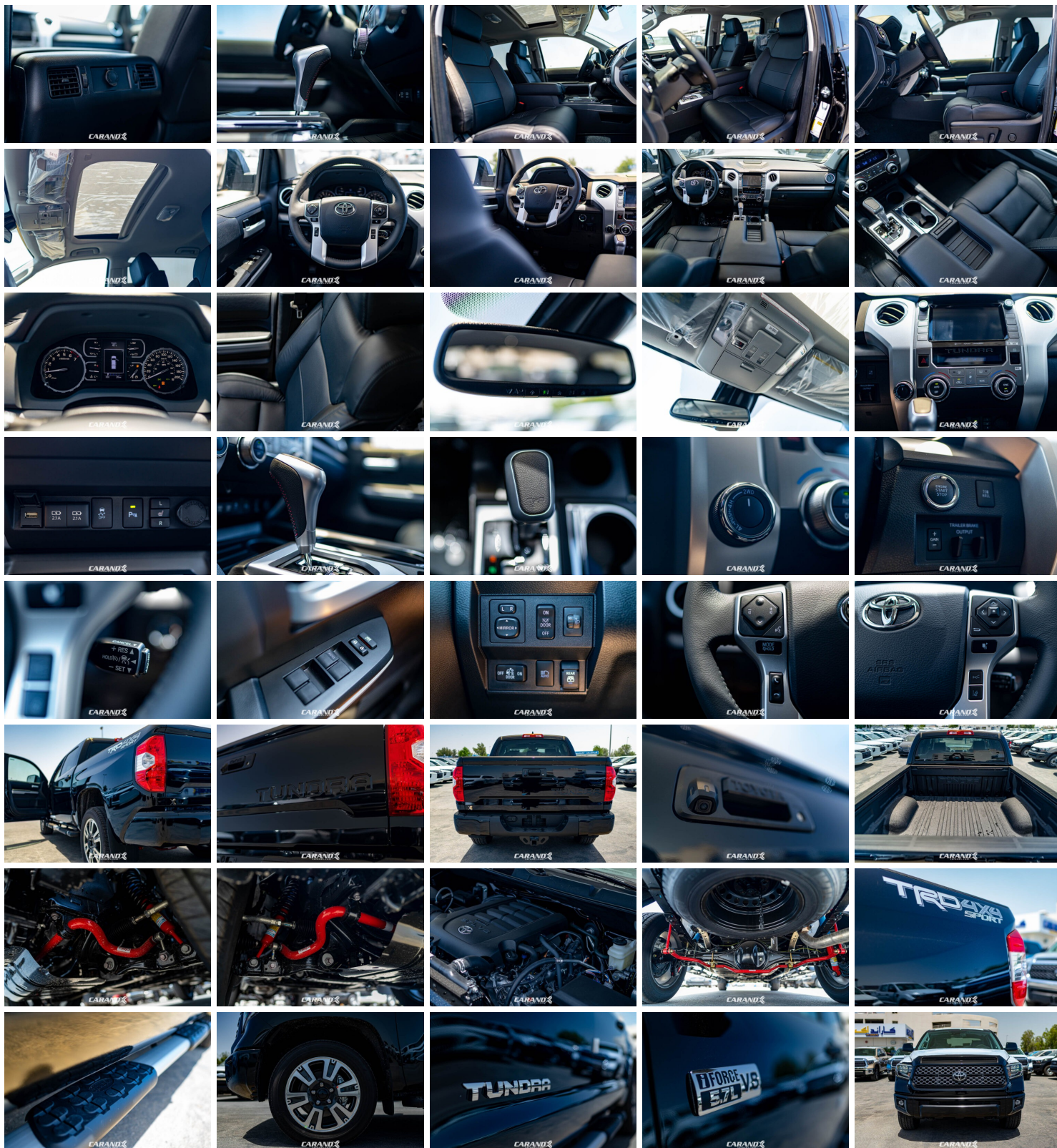
- TRD Sport Package
- Gray grille
- 18-in. 5-spoke alloy wheels
- Halogen headlights with LED accent lights
- Halogen fog lights
- Running boards

## SAFETY/CONVENIENCE

- Toyota Safety Sense™ P (TSS-P)40
- Pre-Collision System with Pedestrian Detection (PCS w/PD) 41
- Lane Departure Alert (LDA) 35 with Sway Warning System (SWS) 42
- Automatic High Beams (AHB) 43
- Dynamic Radar Cruise Control (DRCC) 34
- Star Safety System™



GALLERY





Tundra Crewmax TRD Sport Premium

