

SPECIFICATIONS

- Model Code** : TT57PAC40-OFFPLA
Model Year : 2020
Body Type : CrewMax
Axle : 4WD
Displacement : 5.7L
Transmission : Automatic Transmission
Fuel Type : Petrol
Door : 4 Doors
Seats : 5 Seats
Seat Material : Fabric Seats
Rim Size/Type : 18-in. 5-spoke alloy wheels
Temp Control : Dual zone automatic climate control
Headlamp : Halogen headlights with LED accent lights
Window Type : Power
Roof : Power tilt/slide moonroof with sliding sunshade



TECHNICAL SPECIFICATION

- 5.7-Liter Aluminum i-FORCE V8 DOHC 32-Valve with Dual Independent Variable Valve Timing with intelligence (VVT-i)
- 381 hp @ 5600 rpm; 401 lb.-ft. @ 3600 rpm
- Tow Package 3
- 6-speed Electronically Controlled automatic Transmission with intelligence (ECT-i)
- Rear-Wheel Drive (RWD) or 4WDemand part-time 4WD

INTERIOR

- Audio Plus with 8-in. high-resolution touch-screen, and Apple CarPlay,^{®11} Android Auto^{™10} and Amazon Alexa⁶⁹ compatible
- HD Radio[™] 22 and SiriusXM[®] 15
- Bluetooth[®] 14 wireless technology
- USB media port¹² with charging capability
- 40/20/40 split fold-down front bench fabric seat
- Integrated backup camera 9
- Integrated Trailer Brake Controller (ITBC) 37



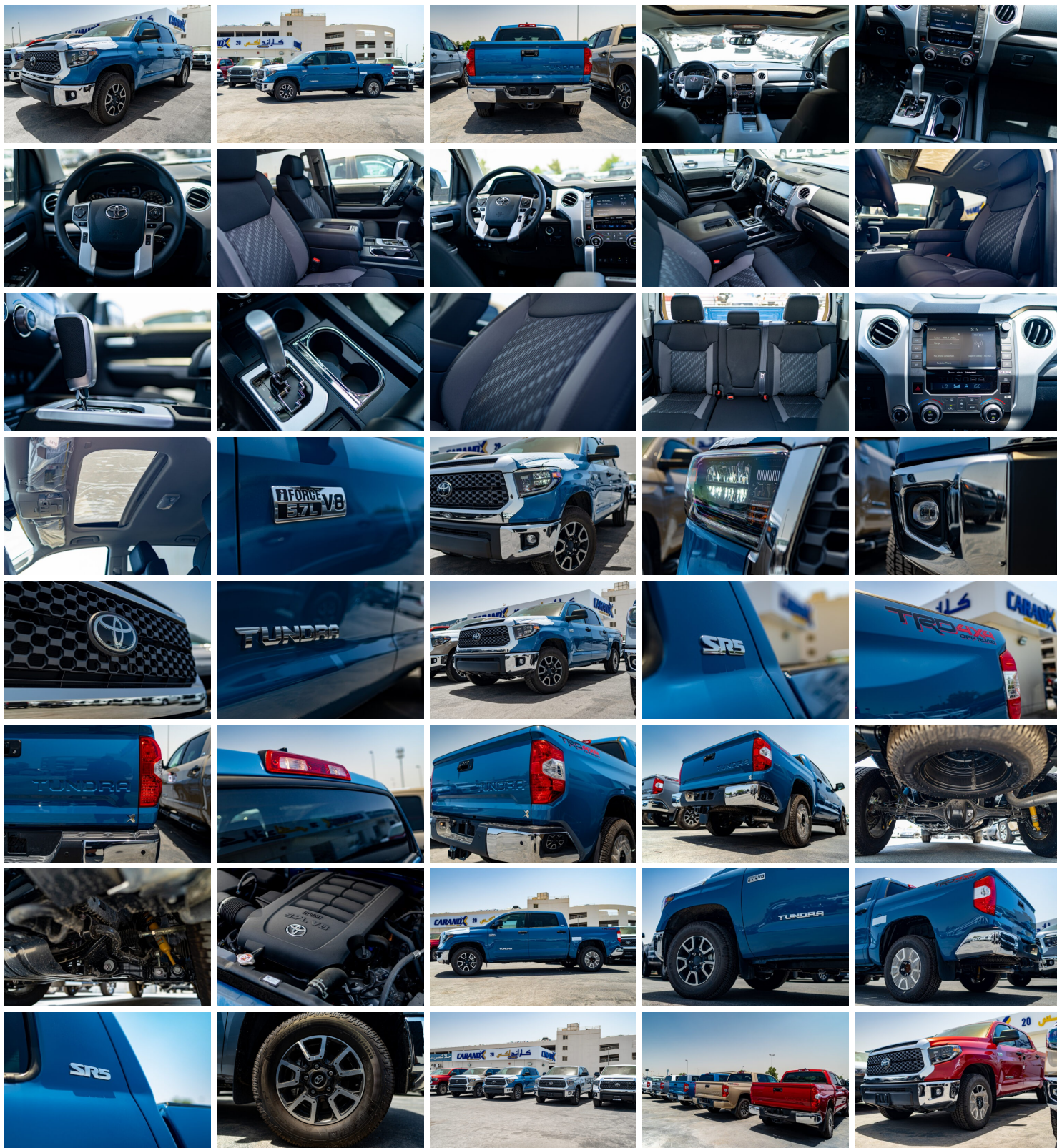
EXTERIOR

- Gray grille with chrome surround
- 18-in. 5-spoke alloy wheels
- Halogen headlights with LED accent lights
- Halogen fog lights
- Chrome front and rear bumper endcaps

SAFETY/CONVENIENCE

- Toyota Safety Sense™ P (TSS-P)40
- Pre-Collision System with Pedestrian Detection (PCS w/PD) 41
- Lane Departure Alert (LDA) 35 with Sway Warning System (SWS) 42
- Automatic High Beams (AHB) 43
- Dynamic Radar Cruise Control (DRCC) 34
- Star Safety System™

GALLERY





Tundra TRD Offroad Crewmax

