



## SPECIFICATIONS

<b>Model Code</b>	: LLX57057PA40-CA
<b>Model Year</b>	: 2020
<b>Body Type</b>	: SUV
<b>Axle</b>	: 4WD
<b>Displacement</b>	: 5.7 L
<b>Transmission</b>	: Automatic Transmission
<b>Fuel Type</b>	: Petrol
<b>Door</b>	: 5 Doors
<b>Seats</b>	: 8 Seats
<b>Seat Material</b>	: Leather
<b>Rim Size/Type</b>	: 21-in 10-spoke alloy wheels
<b>Temp Control</b>	: Manual
<b>Headlamp</b>	: LED
<b>Airbag</b>	: D + P
<b>Window Type</b>	: Power
<b>Roof</b>	: Moonroof, Power Tilt/Slide



## TECHNICAL SPECIFICATION

- Type: 5.7-liter V8 Four Cam 32-valve (3UR-FE, unleaded)
- Piston displacement: 5663cc
- Max. output: 362HP/5600rpm (EEC net)
- Max. torque: 54.0kg-m/3200rpm (EEC net)
- Fuel system: Electronic Fuel Injection

## INTERIOR

- Optitron meters
- 4.2-inch color TFT (Thin Film Transistor) multi-information display
- Color head-up display
- Analog clock
- Premium wood and leather steering wheel
- Inside rear view mirror: automatic day & night + auto high beam camera
- Vanity mirrors and lamps (Front seats)
- Overhead console LED lamp switches; touch type
- Cool box
- Wireless charger
- Power outlets; 1 (DC-12V) in center cluster, 1 (DC-12V) in back of center console box, 1 (AC-220V) in side of luggage space
- Cupholders (Front and outboard second/third row seats)
- Door pockets (Front and rear doors); bottle holders
- Manual rear door window sunshades
- Auto air conditioning system; 4-zone independent temperature controls
- Illuminated scuff plates
- 10-way power driver's seat; power lumbar support, adjustable seat cushion length
- 8-way power front passenger's seat; power lumbar support
- Ventilated Seats (Front and outboard second row seats) Independent control
- Second row seats; one-touch tumble function, power seat slide, center armrest (Cupholders, storage box for small items and climate control switches)
- Power space-up function (Third row seats)
- Lexus Navigation System( SD card maps ), voice BT
- 12.3-inch EMV (Electro Multi-Vision) display



- Lexus LX Premium Sound System; AM/FM radio, in-dash DVD player, 9 speakers, MP3 and WMA (Windows Media Audio) play compatible, DSP (Digital Signal Processor), ASL (Automatic Sound Levelizer)
- Rear seat entertainment system; 11.6-inch displays, mini-jack, HDMI jack, 2 headphone jacks, wireless remote control
- Bluetooth function; hands-free calling, wireless connection with AV-profile compliant player
- 2 USB ports/mini-jack

## EXTERIOR

- Rear door, back door and rear quarter glass; gray privacy laminated glass
- Moonroof; power tilt/slide, auto with jam protection system, remote control
- Door mirrors; side turn signal lamp, auto folding, interlink with reverse gear, power retractable "UN + HEAT + ECM + MEMO + SMART-ILLUMI + CAMERA"
- LED foot area illumination (Door mirrors and side steps)
- Roof rails
- Pintle hook
- Mud guards
- AHB (Automatic High Beam System)
- Unique Signature Grille and Front Spoiler
- LED Door Courtesy Illumination
- Performance Dampers
- LX Sports Package
- Sporty Rear Bumper Spoiler
- 21-in 10-spoke Alloy Wheels with Black finish and 275/50R21 Tires

## SAFETY AND OPERATION FEATURES

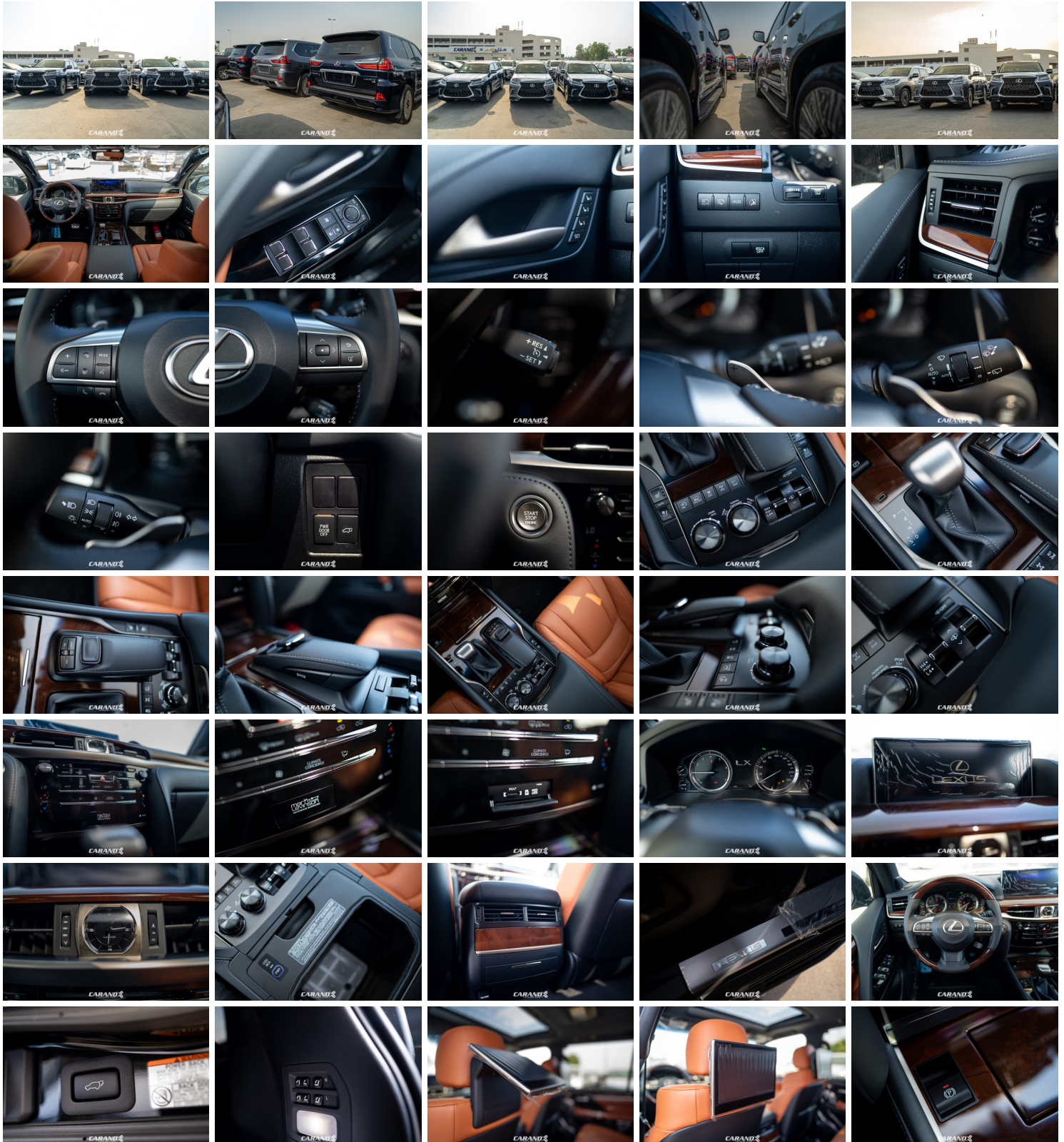
- AHB (Automatic High Beam System)
- AHC (Active Height Control)
- A-TRC (Active Traction Control System)
- EPB (Electric Parking Brake)
- VSC (Vehicle Stability Control)
- Multi-terrain ABS (Anti-lock Brake System) with EBD (Electronic Brake force Distribution)
- Brake Assist system
- Hill Assist Control
- CRWL Control + MTS
- LED 3-eye projector-type headlamps
- Auto light control system
- Auto dynamic headlamp leveling
- Headlamp cleaners
- LED DRL (Daytime Running Lamp)
- LED front fog lamps
- Dual-stage SRS (Supplemental Restraint System) airbags (Front seats)
- SRS knee airbags (Front seats)
- SRS side airbags (Front and outboard second row seats)
- SRS curtain shield airbags (Front door, rear door and rear quarter windows)
- 3-point ELR seat belts (All seats)
- Security system; alarm, immobilizer system
- TPWS (Tire Pressure Warning System)

- Power tilt and telescopic steering column; auto-away/auto-return function
- Steering wheel control switches (Audio , Display , TEL , Voice)
- Drive mode select with Customize Mode
- Position memory switches (Driver's seat); 3-memory
- Cruise Control
- Smart Entry & Start System
- Card Key
- Parking Assist Monitor
- Multi-Terrain Monitor "4 Cam" +BGM
- Lexus parking assist-sensor
- Power back door (Upper section)
- Rain Sensor
- Rear window wiper washer control + revers sensing





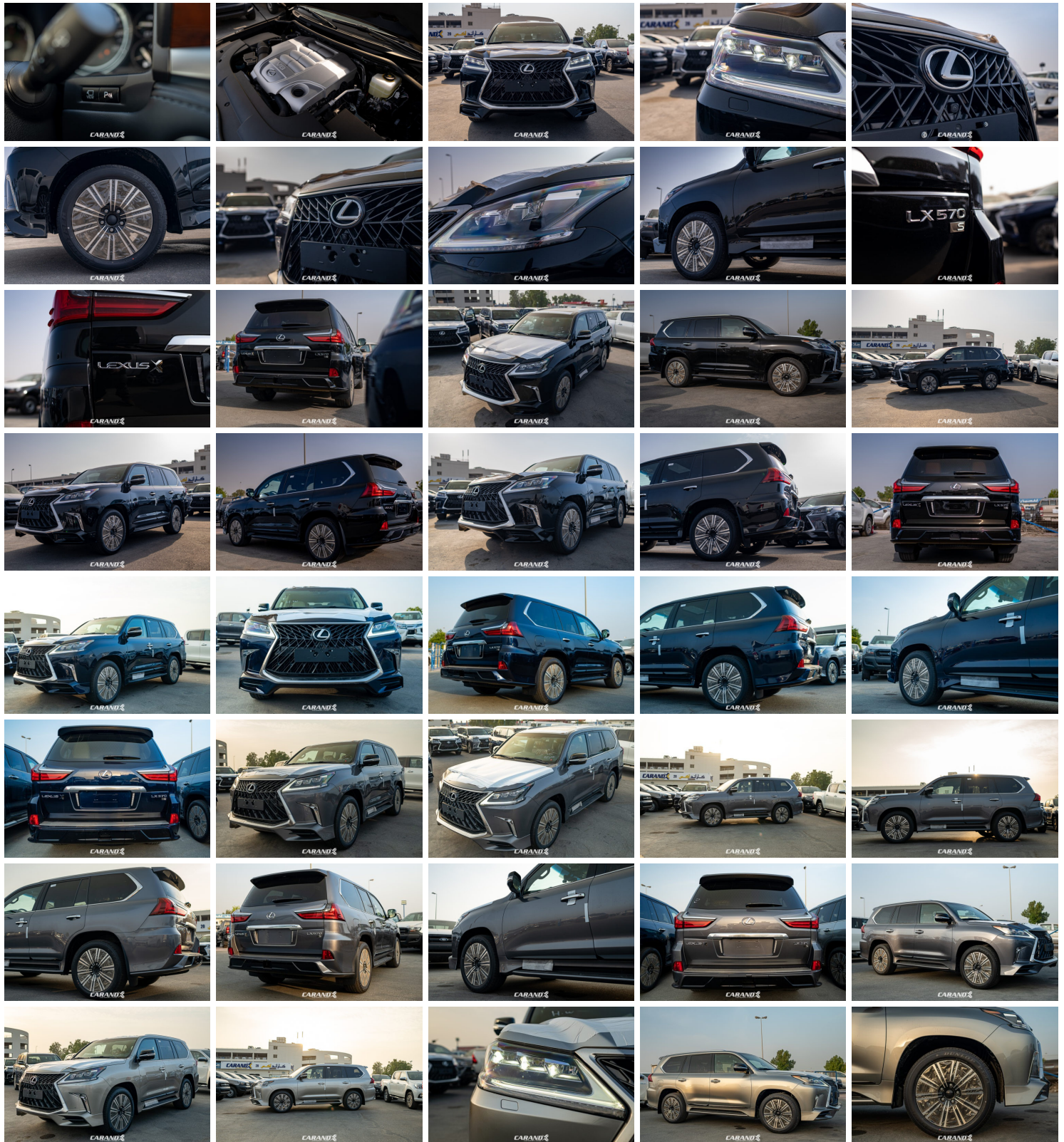
## GALLERY







LX570 Sport 5.7L Automatic Transmission





## LX570 Sport 5.7L Automatic Transmission

