



Hilux GLXS-V 2.4L Diesel

DOUBLE CABIN 4x4 AUTOMATIC TRANSMISSION
2021



SPECIFICATIONS

- Model Code** : TH24DAD421-MS
- Model Year** : 2021
- Body Type** : Pick Up
- Axle** : 4WD
- Displacement** : 2.4 Liter
- Transmission** : Automatic Transmission
- Fuel Type** : Diesel
- Door** : 4 Doors
- Seats** : 5 Seater
- Seat Material** : Fabric Seats
- Rim Size/Type** : 17" Alloy Black Wheels
- Temp Control** : Auto Air Conditioner
- Headlamp** : LED with Auto Levelling
- Airbag** : Driver + Passenger, Knee for Driver
- Window Type** : Power
- Roof** : Standard



Hilux GLXS-V 2.4L Diesel

DOUBLE CABIN 4x4 AUTOMATIC TRANSMISSION
2021

TECHNICAL

- Engine: 2.4-Liter 4 CYL 16V DOHC
- EFI with Common Rail & Intercooler (Euro 4 with OBD)
- Torque KgM SAE (Net) 40.8
- Part-Time 4WD
- Rear Diff Lock
- Front V.Disc Brake / Rear Drum Brake
- Double Wishbone Front Suspension
- Leaf Spring Rear Suspension

INTERIOR

- Urethane W/ Control Switches, High Silver Steering Wheel
- 8 Inch Display Audio Bluetooth with DVD, USB, AUX, AM, FM
- 6 Speakers Door + Tweeter
- Audio, Tel & Voice Recognition +Multi Info Display-Hi
- USB Charger
- Console Box with Soft Lid
- Front Seat Belt 3PELRx2 W/PT & FL
- Vertical Seat Adjuster
- Rear Seat Belt 3PELRx2+2PNRx1
- Headrest
- Centre Armrest
- Digital Clock
- Day and Night Rear View Mirror
- Sunvisor D(W/HOLDER) + P(W/MIRROR & LID)
- AC/Heater Auto + Rear Duct
- Meter Illumination Control
- Coll Glove Box
- Cruise Control
- Door Courtesy Lamp with Reflector
- Safety Kit



Hilux GLXS-V 2.4L Diesel

DOUBLE CABIN 4x4 AUTOMATIC TRANSMISSION
2021

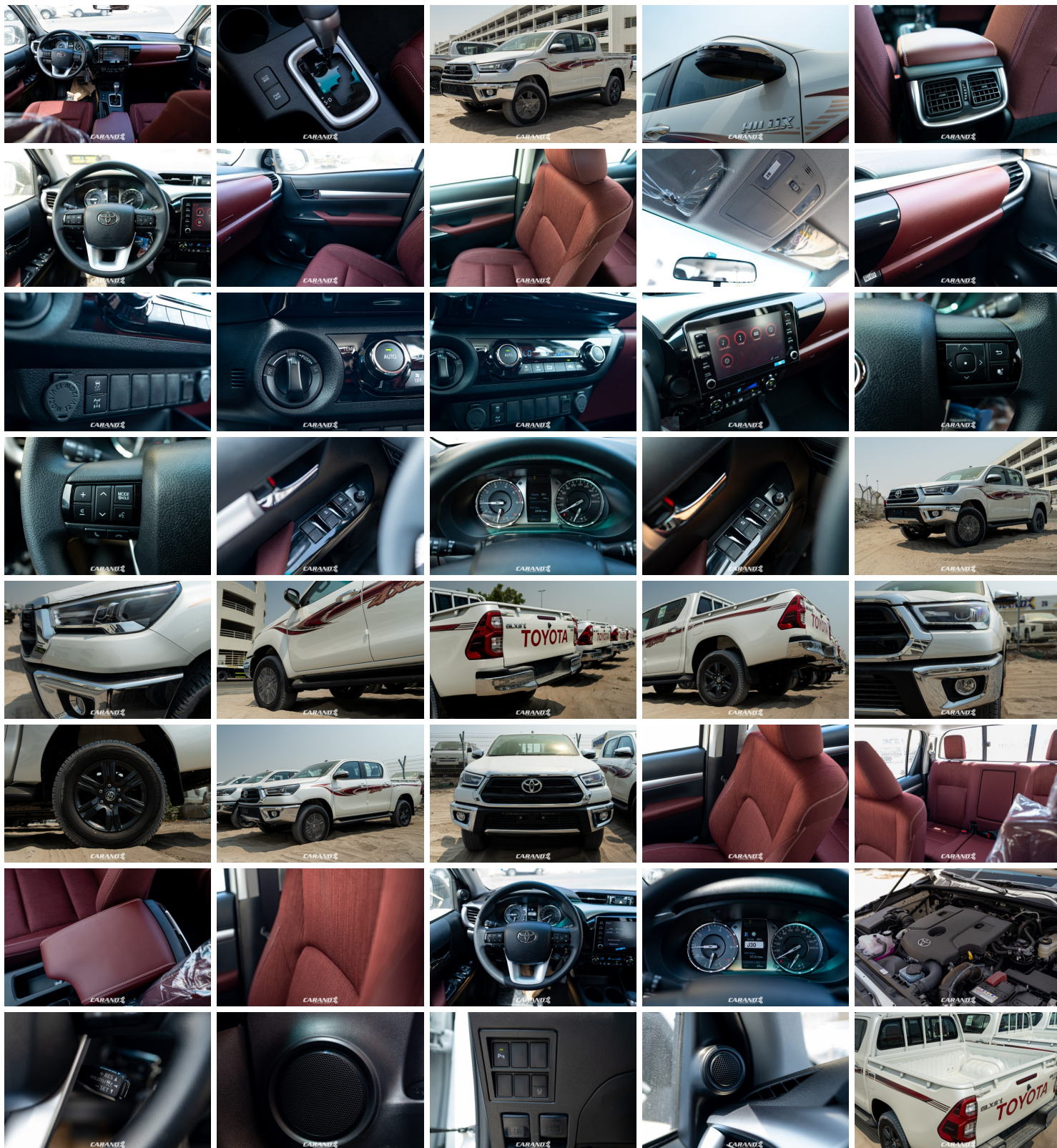
EXTERIOR

- Short Pole Antenna
- Bumper Fr+Rr Steel / Steel Step Chrome
- Chrome Plated Door Handles
- Front +Rear Mudguards
- LED High Mount Stop Lamp
- Side Mirror Color Keyed with Chrome Plated Turn Signal
- Side Step
- Side Strip New Design
- Green Laminated with Top Shade Windshield Glass
- Wiper Front ADJ. Intermittent Mist
- Back View Camera
- GLX.S Badge
- Front Fog Lamp
- Chrome + Metallic Black New Design Front Grill
- Rear Fog Lamp
- Slide Type Rear Window
- J'Deck with Guard Frame
- Tailgate Lift Assist
- Hood Lift Assist
- IR Cut Glass (FR+SIDE+RR)
- Sensors FR2+RR4

SAFETY FEATURE AND ADDITIONAL FEATURES

- VSC with + Hillstart Assist Control (HAC) + Trailer Sway Control (TSC)
- Light Control System with Follow Me Home
- Anti Theft Immobiliser
- ECO / Power Drive Mode
- Multi Info Display with TFT Type
- Tyre Pressure Monitoring System

GALLERY





Hilux GLXS-V 2.4L Diesel

DOUBLE CABIN 4x4 AUTOMATIC TRANSMISSION
2021

