



Hilux GLX Limited 2.4L Diesel

AUTOMATIC TRANSMISSION DOUBLE CABIN 4x4



SPECIFICATIONS

- Model Code** : TH24DAD420-GLXAM
- Model Year** : 2020
- Body Type** : Pick Up
- Axle** : 4WD
- Displacement** : 2.4 Liter
- Transmission** : 6-Speed Automatic Transmission
- Fuel Type** : Diesel
- Door** : 4 Doors
- Seats** : 5 Seater
- Seat Material** : Fabric Seats
- Rim Size/Type** : 17" Alloy Wheels
- Temp Control** : Auto Air Conditioner
- Headlamp** : LED Auto Leveling
- Airbag** : Driver + Passenger, Knee for Driver
- Window Type** : Power
- Roof** : Standard



Hilux GLX Limited 2.4L Diesel

AUTOMATIC TRANSMISSION DOUBLE CABIN 4x4

TECHNICAL

- Engine : 2393 cc , (4) Cylinders in-line
- Power : 148 HP
- Torque : 400 N.M
- Coil / Rigid Leaf Suspension
- Rear Differential Lock

INTERIOR

- Wireless Door Lock (Smart + Answer Back)
- Cruise Control
- Power Steering
- Front Air Condition (Auto)
- Steering Column (Tilt Mechanical)
- Display Audio (AM/FM CD, Bluetooth) , 6 Speakers With Navigation
- Steering Switch (Audio)
- Power Door Lock
- Cool Box
- Separate Front Seat



Hilux GLX Limited 2.4L Diesel

AUTOMATIC TRANSMISSION DOUBLE CABIN 4x4

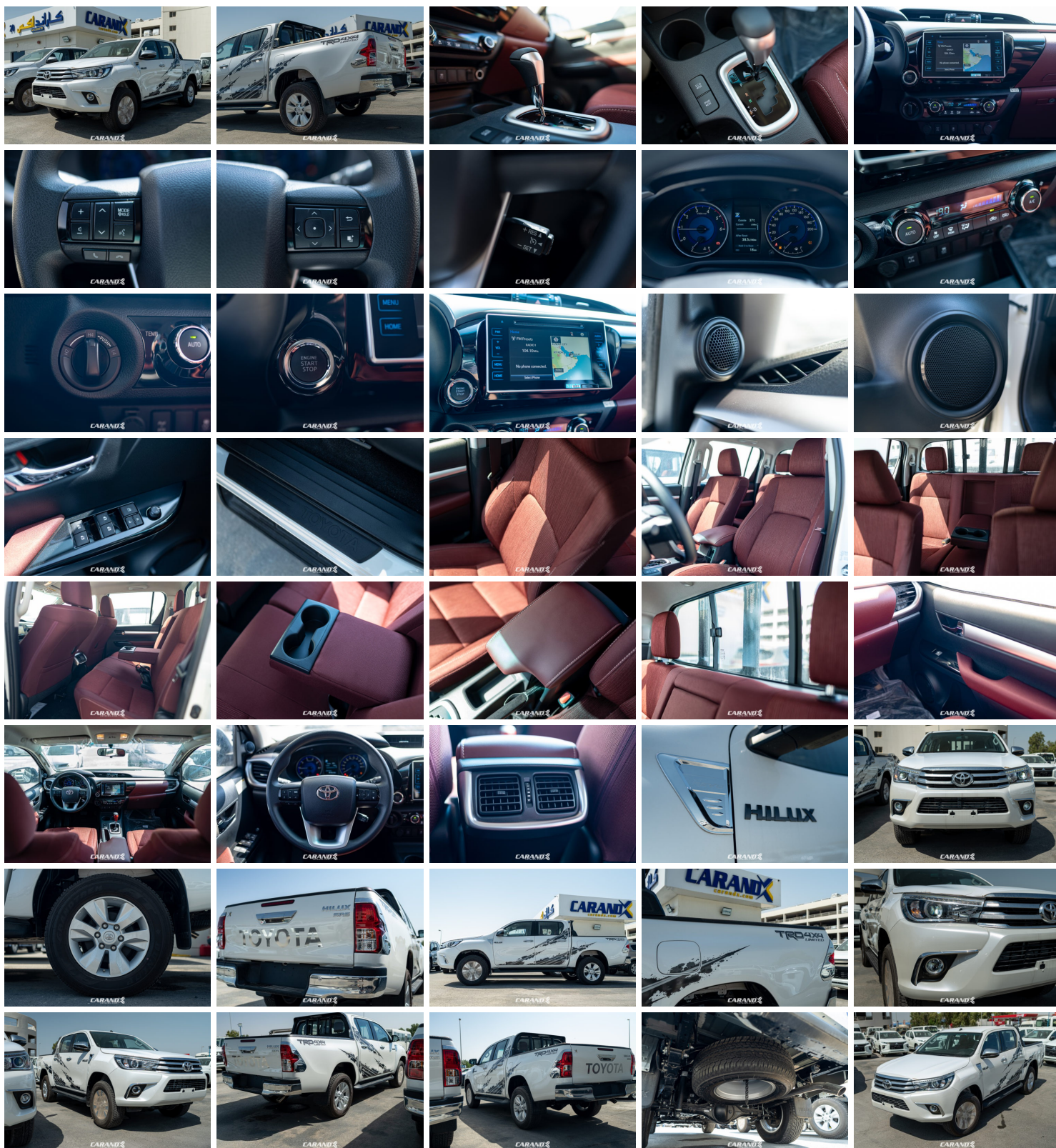
EXTERIOR

- Back Camera
- Rear Sensors
- Front Fog and Driving Lamp
- Mud Guard (Front + Rear)
- Chrome Door Outside Handle
- Electric Outside Rear View Mirror (Chrome) + Side Turn Lamp
- Stripe Tape
- Rear Lamp Guard (Chrome Cover)
- High Mount Stop Lamp (LED)
- Muffler Cutter
- Rear Fog Lamp

SAFETY FEATURE AND ADDITIONAL FEATURES

- Anti Locking Brakes (ABS)
- Anti-Theft System (Immobilizer)
- Vehicle Stability Control (VSC)
- HAC + TSC
- Tire Inflation Pressure Warning

GALLERY





Hilux GLX Limited 2.4L Diesel

AUTOMATIC TRANSMISSION DOUBLE CABIN 4x4

