



# Hilux Adventure-V 2.8L Diesel

DOUBLE CABIN 4x4 MANUAL TRANSMISSION  
2021



## SPECIFICATIONS

- Model Code** : TH28DMD421-AVMS
- Model Year** : 2021
- Body Type** : Pick Up
- Axle** : 4WD
- Displacement** : 2.8 Liter
- Transmission** : 6-Speed Manual Transmission
- Fuel Type** : Diesel
- Door** : 4 Doors
- Seats** : 5 Seater
- Seat Material** : Dark Gray Fabric Seats
- Rim Size/Type** : 18" Alloy Black Wheels
- Temp Control** : Auto Air Conditioner
- Headlamp** : LED with Auto Levelling
- Airbag** : Driver + Passenger, Knee for Driver
- Window Type** : Power
- Roof** : Standard



# Hilux Adventure-V 2.8L Diesel

DOUBLE CABIN 4x4 MANUAL TRANSMISSION  
2021

## TECHNICAL

- Engine: 2.8-Liter 4 CYL 16V DOHC
- EFI with Common Rail & Intercooler (Euro 4 with OBD)
- Torque KgM SAE (Net) 51
- Part-Time 4WD
- Rear Diff Lock with Auto Disconnect Differential
- Front V.Disc Brake / Rear Drum Brake
- Double Wishbone Front Suspension
- Leaf Spring Rear Suspension

## INTERIOR

- Urethane W/ Control Switches, High Silver Steering Wheel
- 8 Inch Display Audio Bluetooth with DVD, USB, AUX, AM, FM
- 6 Speakers Door
- USB Charger
- Console Box with Soft Lid Silver + Register
- Front Seat Belt 3PELRx2 W/PT & FL
- Vertical Seat Adjuster
- Rear Seat Belt 3PELRx2+2PNRx1
- 2 Headrest
- Centre Armrest
- Digital Clock
- Day and Night Rear View Mirror
- Sunvisor D(W/HOLDER) + P(W/MIRROR & LID)
- Tachometer
- AC/Heater Auto + Rear Duct
- Keyless Entry with Smart + Push Start
- Meter Illumination Control
- Power Door Lock
- Power Window
- Adj. Intermittent: Mist Wiper
- Cool Glove Box
- Cruise Control
- Door Courtesy Lamp with Reflector
- Eco/Power Drive Mode with IMT
- Multi Info Display with TFT Type
- Leather with Black Accents Shift Lever Knob
- Urethane with Control Switches Black Accents Steering Wheel
- USB Charger



# Hilux Adventure-V 2.8L Diesel

DOUBLE CABIN 4x4 MANUAL TRANSMISSION  
2021

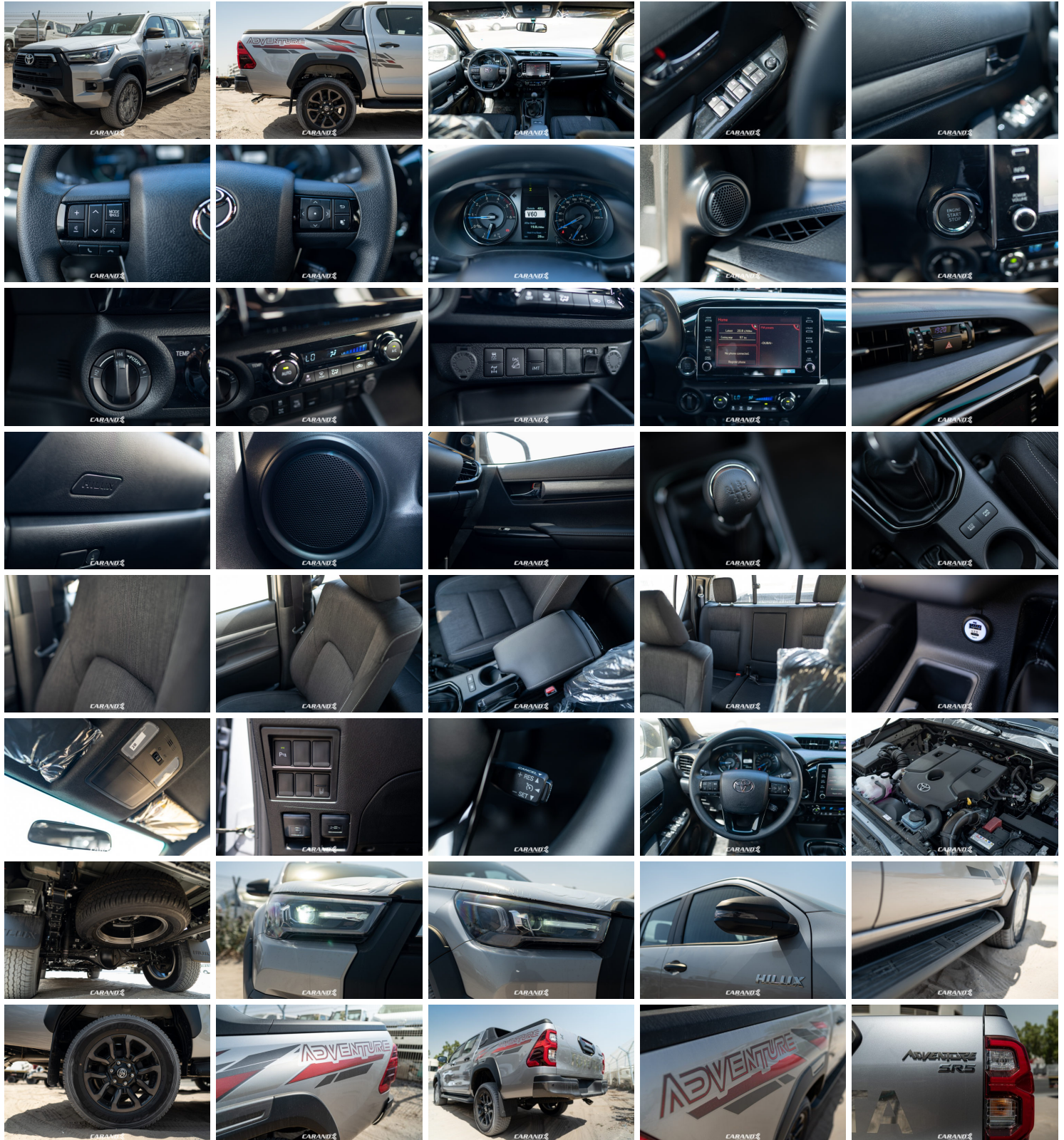
## EXTERIOR

- ADVENTURE PACKAGE:  
Bumper/Grille/Overfender/Fog Lamp/18" Alloy/Deck Bar/Bedliner/Adventure Emblem/Sporty Seats/Black door Handles & Mirrors/Black Interior
- Bumper Fr+Rr Colour Keyed / Steel Step Painter
- Black Door Handles
- Front +Rear Mudguards
- LED High Mount Stop Lamp
- Side Mirror Color Keyed with Black Turn Signal
- Side Step
- Adventure Side Stripe
- Green Laminated with Top Shade Windshield Glass
- Short Pole Antenna
- Back View Camera
- Adventure Emblem (OE) Badge
- Front Fog Lamp
- Muffler Cutter
- Black + Chrome Radiator Grille
- Rear Fog Lamp
- Slide Type Rear Window
- A Deck without Guard Frame
- Tailgate Lift Assist
- Hood Lift Assist
- IR Cut Glass (Fr.+Side+Rr)
- 2-Front and 4-Rear Sensor

## SAFETY FEATURE AND ADDITIONAL FEATURES

- Safety Kit
- ABS+EBD+BA
- VSC+HILLSTART ASSIST CONTROL (HAC) + TRAILER SWAY CONTROL (TSC)
- DOWNHILL ASSIST (DAC)+LIMITED SLIP DIFFERENTIAL (LSD)
- Light Control System with Follow me Home
- Anti Theft Immobiliser
- Tire Pressure Monitoring System

## GALLERY





# Hilux Adventure-V 2.8L Diesel

DOUBLE CABIN 4x4 MANUAL TRANSMISSION  
2021

