



Hilux GLX 2.4L Diesel

MANUAL TRANSMISSION DOUBLE CABIN 4x4



SPECIFICATIONS

Model Code	: TH24DMDC40-AM
Model Year	: 2020
Body Type	: PICK UP
Axle	: 4WD
Displacement	: 2.4L
Transmission	: Manual Transmission
Fuel Type	: Diesel
Door	: 4 Doors
Seats	: 5 Seater
Seat Material	: Fabric Seats
Seat Option	: Manual
Rim Size/Type	: 17" Alloy Wheels
Spare Wheel	: Floor mounted
Temp Control	: Manual
Headlamp	: Multi-Reflector Halogen
Airbag	: D + P
Window Type	: Power



Hilux GLX 2.4L Diesel

MANUAL TRANSMISSION DOUBLE CABIN 4x4

TECHNICAL

- Engine : 2393 cc , (4) Cylinders in-line
- Power : 148 HP
- Torque : 400 N.M
- Transmission : 6 Speed Manual
- Coil / Rigid Leaf Suspension
- Wireless Door Lock (Smart + Answer Back)
- Power Steering
- Rear Differential Lock
- Back Camera

INTERIOR

- Front Air Condition (Auto)
- Seat Material :Fabric
- Steering Column (Tilt Mechanical)
- Audio: AM/FM CD, Bluetooth , 4 Speakers
- Steering Switch (Audio)
- Power Window (All Auto)
- Power Door Lock
- Cool Box
- Separate Front Seat
- Tire Inflation Pressure Warning



Hilux GLX 2.4L Diesel

MANUAL TRANSMISSION DOUBLE CABIN 4x4

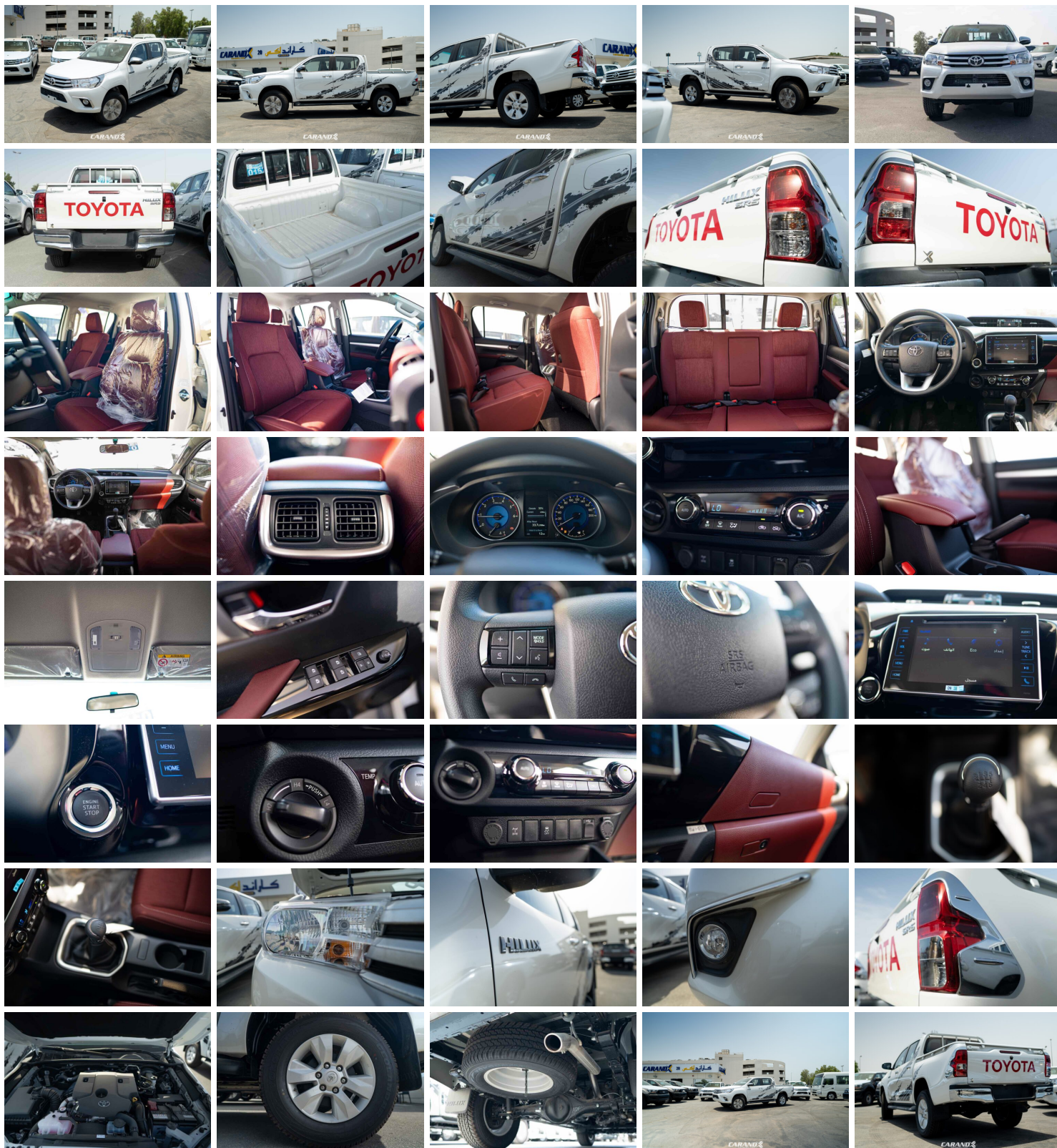
EXTERIOR

- Alloy Wheel 17"
- Front Fog and Driving Lamp
- Mud Guard (Front + Rear)
- Chrome Door Outside Handle
- Electric Outside Rear View Mirror (Chrome) + Side Turn Lamp
- Stripe Tape
- Rear Lamp Guard (Chrome Cover)
- High Mount Stop Lamp (LED)
- Muffler Cutter
- Rear Fog Lamp
- Headlamp Garnish

SAFETY FEATURE

- Anti Locking Brakes (ABS)
- 3 Air Bag System (Driver , Passenger and Knee for D.)
- Anti-Theft System (Immobilizer)
- Vehicle Stability Control (VSC)
- HAC + TSC

GALLERY





Hilux GLX 2.4L Diesel

MANUAL TRANSMISSION DOUBLE CABIN 4x4

