



SPECIFICATIONS

Model Code	: TH27PMDC20-AG
Model Year	: 2020
Body Type	: Double Cabin Pickup
Axle	: 4x2
Displacement	: 2.7 Liter
Transmission	: 5-Speed Manual
Fuel Type	: Petrol
Door	: 4 Doors
Seats	: 5 Seats
Seat Material	: Fabric Seats
Rim Size/Type	: 17" Steel Wheels
Headlamp	: Multi-Reflector Halogen
Airbag	: Dual
Window Type	: Power



TECHNICAL

- 2.7L, 4-CYLINDER, 16-VALVE, DOHC, DUAL VVT-i (2TR-FE)
- Double Wishbone Front Suspension
- Leaf Spring Rigid Axle Rear Suspension

INTERIOR

- Front Air Condition (Manual)
- Seat Material :Fabric
- Steering Column (Tilt Manual)
- Power Window (All Auto)
- Power Door Lock
- Separate Front Seat



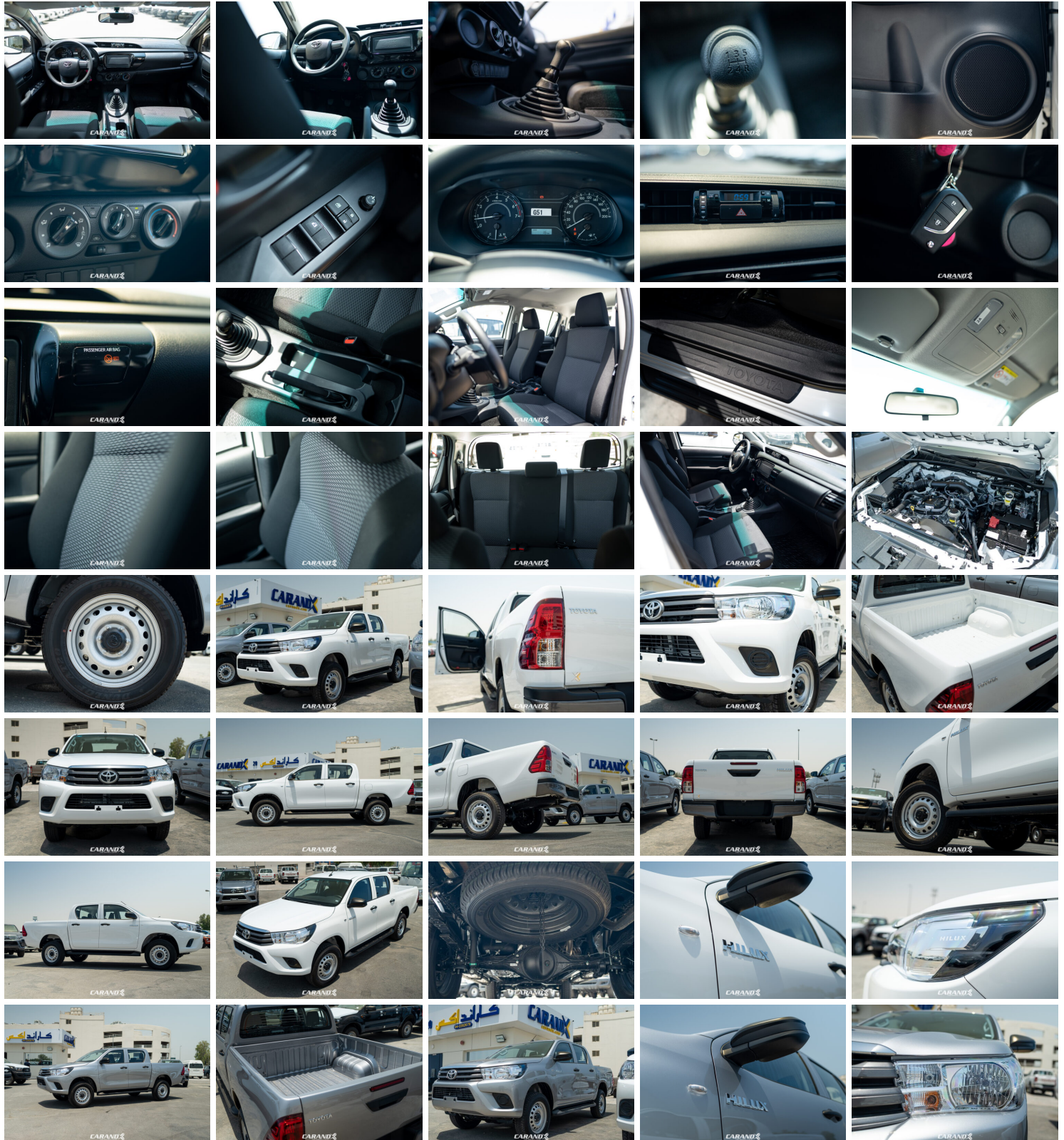
EXTERIOR

- Body Coloured Front Bumper
- Steel Rear Bumper
- Halogen Headlamp
- 17" Steel Wheels

SAFETY FEATURE

- Anti Locking Brakes (ABS)
- Brake Assist (BA)
- Electronic Brake Force Distribution (EBD)
- Vehicle Stability Control (VSC)
- Hill Assist Control
- Tyre Inflation Pressure Warning
- Emergency Brake Signal

GALLERY





Hilux 2.7L 4x2 Double Cabin

