



Hilux 2.7L Petrol

DOUBLE CABIN AUTOMATIC TRANSMISSION 4X4
2021



SPECIFICATIONS

Model Code	: TH27PDA421-AB
Model Year	: 2021
Body Type	: Pick Up
Axle	: 4WD
Displacement	: 2.7L
Transmission	: Automatic Transmission
Fuel Type	: Petrol
Door	: 4 Doors
Seats	: 5 Seater
Seat Material	: Fabric Seats
Rim Size/Type	: 17" Alloy Wheels
Temp Control	: Auto Air Conditioner
Headlamp	: LED
Airbag	: Driver +Passenger, Knee for Driver
Window Type	: Power
Roof	: Standard



Hilux 2.7L Petrol

DOUBLE CABIN AUTOMATIC TRANSMISSION 4X4
2021

TECHNICAL

- Engine: 2.7-Liter DOHC 24-Valve V6
- Power: 164HP/5200rpm
- Transmission: 6 Super ECT (Electronic Controlled Transmission)
- Double wishbone (Coil spring, with a stabilizer)/Leaf springs

INTERIOR

- 8 Inch Display Audio Bluetooth
- 6 Speakers Door + Tweeter
- Audio, Tel & Voice Recognition +Multi Info Display-Hi
- Front Cool Box
- Cruise Control
- Maroon Floor Mat
- Day and Night Rear View Mirror
- Panel Wooden LHD DA Instrumental Panel
- Power Window with Auto Up-Down Jam Protection at all Seat
- Tilt & Telesco Manual Electrical Lock Steering Column
- Urethane Steering Wheel



Hilux 2.7L Petrol

DOUBLE CABIN AUTOMATIC TRANSMISSION 4X4
2021

EXTERIOR

- Tail Gate Lift for D-Cab J-deck
- Standard Bed Liner (D-Cab, J-Deck, w/ Guard Frame)
- Door Full Trim Fab-Silver
- Front Fog and Driving Lamp
- Headlamp Auto Leveling
- High Mount Stop Lamp with LED
- Wide Over Fender Moulding
- Power Door Lock
- Rear Bumper Steel Step with Chrome
- Rear Fog Lamps
- Narrow Black (P/U) Step Cover
- Type E D-CAB / 4X4 / Long / Wide Body (040/070/1D6) Stripe Tape
- 265/65R17 All Terrain Alumi (PU) Tire and Disc Wheel

SAFETY FEATURE AND ADDITIONAL FEATURES

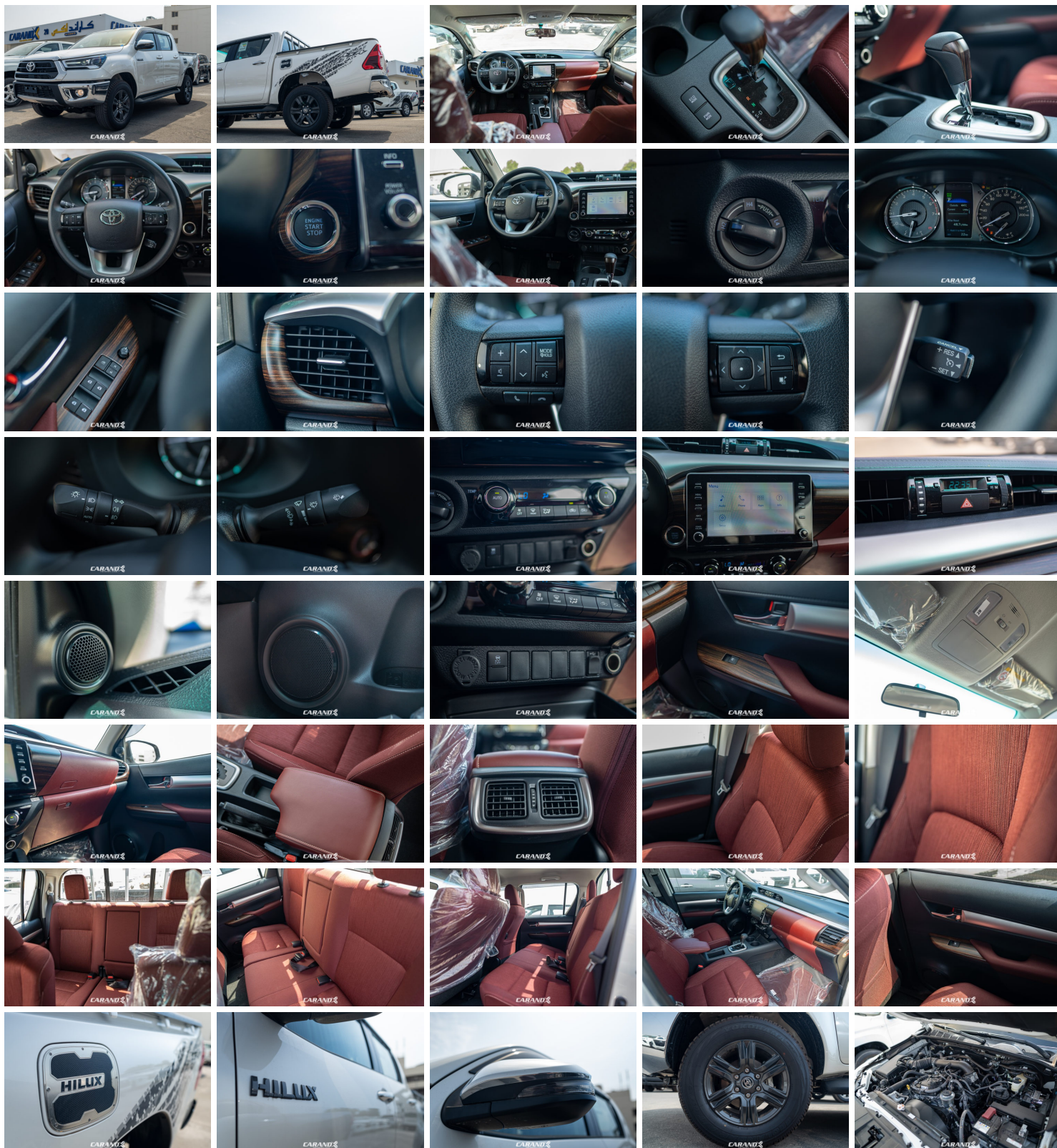
- VSC With+HAC+TSC
- Wireless / Smart Door Lock + Answer Back



Hilux 2.7L Petrol

DOUBLE CABIN AUTOMATIC TRANSMISSION 4X4
2021

GALLERY





Hilux 2.7L Petrol

DOUBLE CABIN AUTOMATIC TRANSMISSION 4X4
2021

