



## SPECIFICATIONS

<b>Model Code</b>	: TGRJ7940PMD20-AM
<b>Model Year</b>	: 2020
<b>Body Type</b>	: Single Cabin Pick Up
<b>Axle</b>	: 4WD
<b>Displacement</b>	: 4.0L
<b>Transmission</b>	: Manual Transmission
<b>Fuel Type</b>	: Petrol
<b>Door</b>	: 2 Doors
<b>Seats</b>	: 3 Seats
<b>Seat Material</b>	: Fabric
<b>Rim Size/Type</b>	: 16"Steel
<b>Temp Control</b>	: Manual
<b>Headlamp</b>	: HALOGEN
<b>Airbag</b>	: D + P
<b>Window Type</b>	: Power
<b>Roof</b>	: Standard



## GRJ79 4.0L Petrol

MANUAL TRANSMISSION W/O WINCH

### TECHNICAL SPECIFICATION

- Engine 4.0 L, V6 6 Cylinder
- Max Power 228 HP/5200 RPM
- Max Torque 360 N.M /3800 RPM
- 5 Speed Manual Transmission
- Coil /Leaf Heavy (11 Leaves)

### INTERIOR

- Audio AM/FM/CD/AUX/USB with Bluetooth
- 2 Speakers
- Leather and Wood Steering Wheel
- Steering Column Tilt
- Wood on Instrument Panel
- Bench Seat
- Air conditioner
- Heater
- Power windows
- Power Door Lock Driver Control
- Airbags for Driver and Passenger
- Cup Holder
- Door Pocket
- Glove Box + Key
- Multi - Display Clock
- Floor Mat



## GRJ79 4.0L Petrol

MANUAL TRANSMISSION W/O WINCH

### EXTERIOR

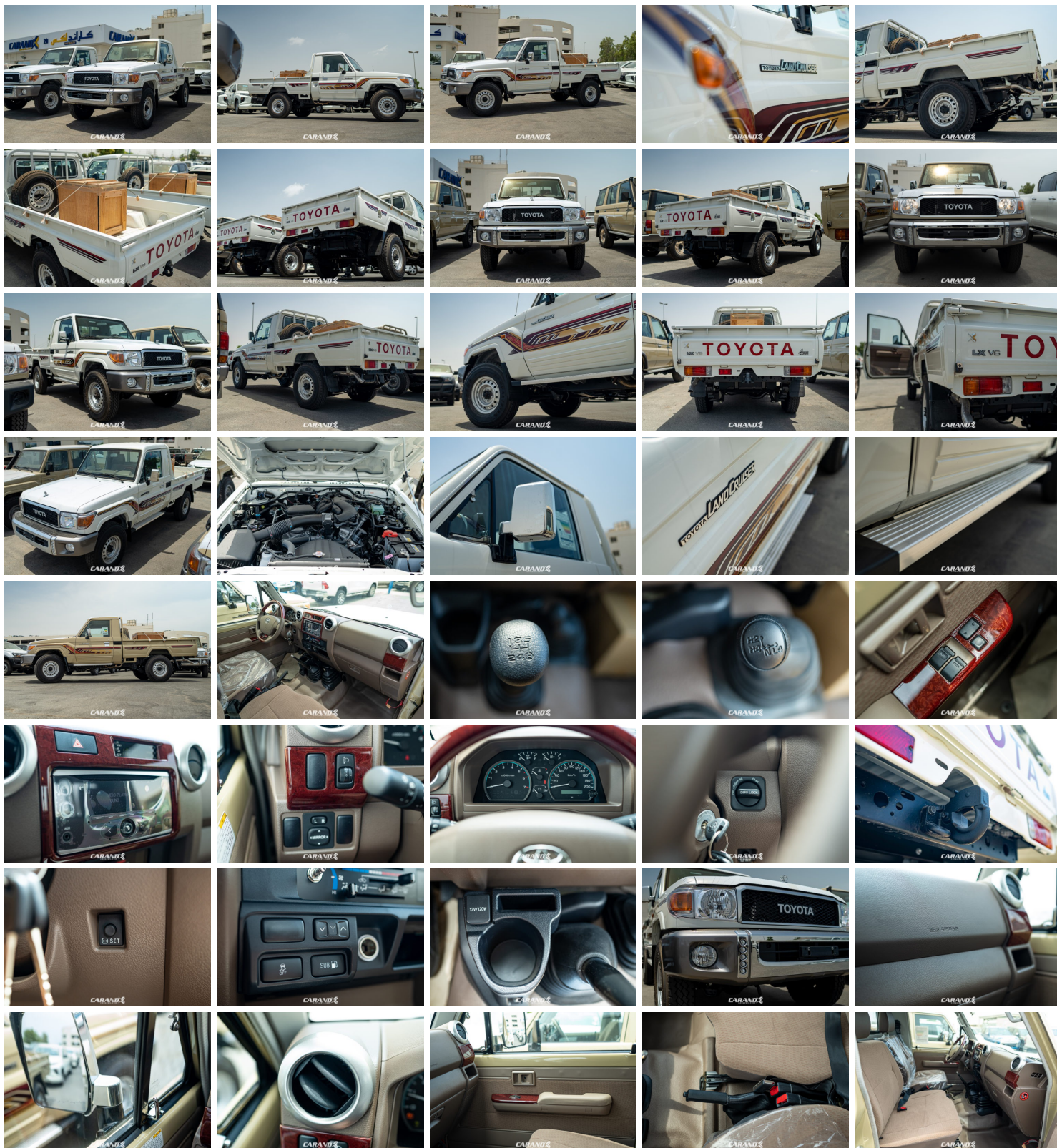
- Body Colored Cladding Panel
- Body Stripe
- Headlamp Leveling
- Daytime Running Light
- Front Fog Lamps
- Front Bumper LED Lights
- Chrome Coloured Door Mirrors
- Wheel Cap Steel
- Tire Size 225/95R16
- Fuel Tank Cap with Key
- Two Fuel Tank Capacity 90 + 90 L
- Towing Hook Front + Rear
- Front and Rear Mud Guards
- Side Step
- Convex Outside Rear View Mirror
- Spare Wheel Carrier Deck front + Lock
- Tail Gate Mark TOYOTA

### SAFETY AND ADDITIONAL FEATURES

- (ABS) Anti-Lock Braking System
- (BA) Brake Assist
- (EBD) Electronic Brake Distribution
- (VSC) Vehicle Stability Control
- (ATRC) Active Traction Control
- (HAC) Hill Start Assist Control
- Fire Extinguisher
- Rear Differential Ratio 4.3
- Wireless Door lock



## GALLERY







# GRJ79 4.0L Petrol

MANUAL TRANSMISSION W/O WINCH

